

LIGHTHOUSE

THE ATLANTIC LIGHT

CASCAIS



LIGHTHOUSE

50

TRICOS
REAL ESTATE



Tricos Real Estate is a Portuguese, family-owned company operating from Lisbon for three generations. Since 1978

Tricos has established itself as an industry leader by developing residential and commercial projects with a focus on superior quality and sustainable building practices.

Tricos specialises in creating strategic partnerships with investors, government entities, and construction companies to deliver successful projects, both in Portugal and internationally in locations such as London, Luanda, and Marbella. We value our long-term relationships with local suppliers, ensuring both quality and efficiency in our developments.

With a personalized approach, Tricos offers investment opportunities and collaborations that transform ideas into successful real estate projects. Our mission is to fuse local charm and modern living in Lisbon and other strategic locations, delivering timeless and innovative solutions in the real estate sector.



LIGHTHOUSE

THE ATLANTIC LIGHT

CASCAIS





Follow the light to your new home in Cascais.

Welcome to LIGHTHOUSE.



LIGHTHOUSE


TRICOS
REAL ESTATE

10	<i>Cascais, the portuguese jewel</i>	16	<i>Visconde da Luz neighborhood (centro)</i>
12	<i>Quality of life and nature</i>	18	<i>Cascais amenities list</i>
14	<i>Map of points of interest</i>	20	<i>Welcome to the Lighthouse</i>

LIGHTHOUSE

CASCAIS





CASCAIS, THE PORTUGUESE JEWEL

Cascais is a coastal municipality located 30 km from Lisbon, which combines history, sophistication, and natural beauty. Once a fishing village, it gained prominence in the 19th century as a retreat for the Portuguese royal family, retaining its aristocratic charm to this day.

Its picturesque streets, and museums like the Museu Conde de Castro Guimarães and the Casa das Histórias Paula Rego, reflect its rich cultural heritage.

Cascais also stands out in the real estate market, attracting investors and international residents. The region offers everything from modern apartments to luxurious beachfront properties, fortifying itself as one of Portugal's most sought-after destinations to live or invest, thanks to its unique blend of historic charm and modern convenience.



Conde de Castro Guimarães Museum



Casa das Histórias Paula Rego





Praia do Guincho



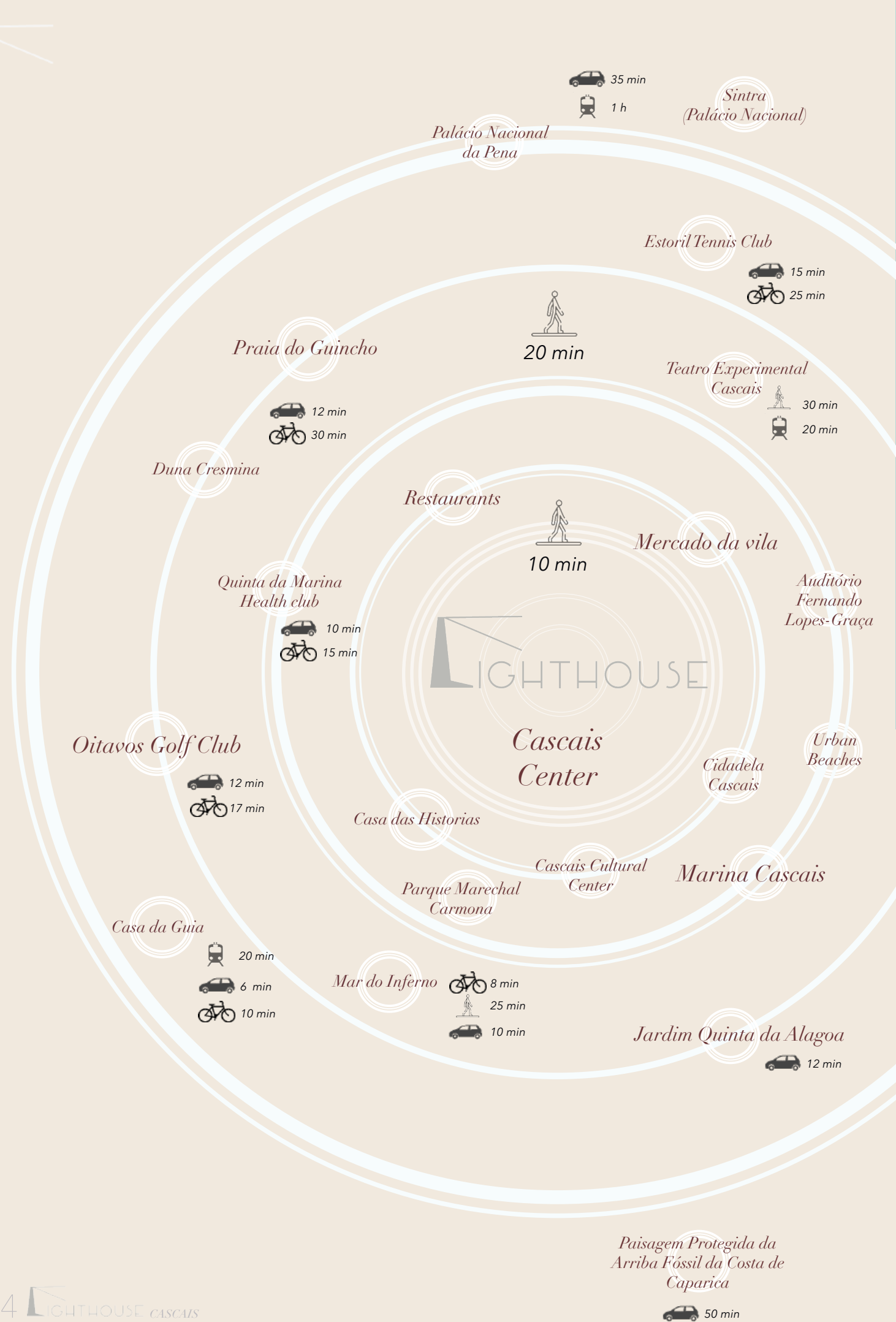
Sintra-Cascais Natural Park



QUALITY OF LIFE AND NATURE

The town is known for its stunning beaches, such as Praia do Guincho, popular among surfers, and its proximity to the Sintra-Cascais Natural Park, ideal for hiking and outdoor adventures. With its mild climate, Cascais offers a relaxing lifestyle, complemented by quality infrastructure, including marinas, golf courses, and award-winning restaurants.

CASCAIS



Cascais is in a prime location, close to Lisbon and its airport (45 minutes), beaches, and national natural parks. The city itself is vibrant with culture, activities and entertainment, as well as sports and leisure centres like the marina.



VISCONDE DA LUZ NEIGHBORHOOD (CENTRO)

Visconde da Luz, located in the centre of Cascais, is an iconic neighbourhood that combines the city's historic charm with the convenience of a modern and cosmopolitan environment.

Situated in a prime location, this neighbourhood is known for its peaceful atmosphere, ideal for those seeking to live close to the capital, but away from the hustle and bustle of the city's busiest areas.

The area is characterized by buildings with traditional architecture, well-preserved facades, and a mix of tree-lined streets and cozy squares. Residents and visitors can find a wide range of local shops, restaurants, cafes, and small markets that preserve the authentic character of the neighbourhood.

Visconde da Luz is also well-served by public transportation, with easy access to various bus and train lines, making it convenient to travel to other parts of Cascais, Estoril, and Lisbon. Its proximity to cultural centres, museums, and green spaces makes the neighbourhood even more appealing, and an excellent area from which to enjoy city life.

This neighbourhood reflects the true essence of Cascais, where tradition and modernity coexist harmoniously, offering a unique living experience in this charming city.





Here are some of the key tourist attractions in the Cascais area:

Beaches:

- Praia do Guincho: Famous for its natural beauty and strong winds, this beach is a hotspot for surfers and windsurfers. It is surrounded by cliffs and offers stunning views of the Atlantic Ocean.
- Praia da Rainha: A smaller, sheltered beach located in the heart of Cascais, ideal for a relaxing day by the sea.
- Praia da Ribeira: A peaceful beach near the centre of Cascais, offering calm waters and a more tranquil atmosphere, perfect for those seeking a quieter spot.
- Praia dos Pescadores: A charming beach located in the centre of Cascais, near the marina, ideal for a relaxing time with views of the ocean.

Restaurants:

- Mar do Inferno: A renowned seafood restaurant offering fresh fish and spectacular ocean views.
- Restaurante O Robalo: Known for its traditional seafood dishes, located near the marina.
- Casa da Guia: A beautiful spot with a variety of restaurants and cafes, overlooking the coastline and offering a range of dining options, from casual to upscale.

Shopping Areas:

- Rua Direita: A lively pedestrian street in the historic center of Cascais, full of boutique shops, cafes, and local stores selling Portuguese crafts, fashion, and more.
- Shopping Center Cascais Parque: A popular shopping destination with a variety of stores, including fashion, electronics, and home goods.

Markets:

- Mercado da Vila: A traditional market in Cascais where you can find fresh local produce, fish, and artisanal products, as well as several food stalls offering ready-to-eat meals.
- Feira de Artesanato: An artisan market held regularly, showcasing handmade goods, local crafts, and souvenirs.

Leisure Areas:

- Parque Marechal Carmona: A large and peaceful park, ideal for relaxing walks, picnics, or enjoying the outdoors. It has beautiful gardens, a lake, and playgrounds for children.
- Jardim da Alagoa: A scenic garden, perfect for a peaceful stroll, located near the town center.
- Cascais Marina: A vibrant spot with various cafes, restaurants, and shops, offering a pleasant place to spend an afternoon by the sea.

Theaters & Cinemas:

- Teatro Municipal de Cascais e Oeiras: A major cultural venue offering a variety of performances, including concerts, theater productions, and dance shows.
- Cascais Cultural Center: A venue for cultural events, including exhibitions, performances, and workshops.
- Cine-Teatro da Alforria: A small local theater focusing on independent films, local productions, and cultural events.

Sports Courts & Activities:

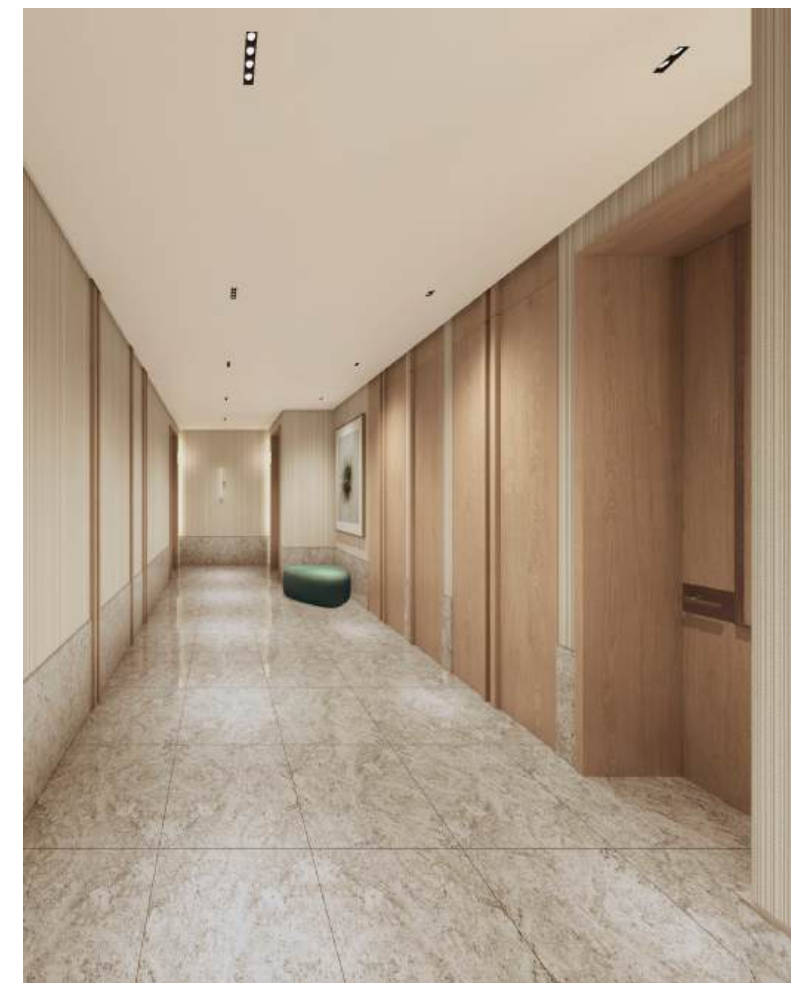
- Cascais Tennis Club: A popular venue for tennis enthusiasts, offering courts and training facilities.
- Cascais Marina: The marina is not only great for sailing but also offers opportunities for water sports such as kayaking, stand-up paddleboarding, and jet skiing.
- Cascais Golf Course: A beautiful 18-hole golf course with stunning views of the coast.
- Boca do Inferno: A dramatic cliff formation near Cascais, known for its breathtaking views and an ideal spot for hiking and photography.

Other Attractions:

- Cascais Citadel: A historic fortress by the sea, which now houses a museum and art galleries. The surrounding area also features restaurants and cafes with panoramic views of the ocean.
- Museu Condes de Castro Guimaraes: A charming museum located in an early 20th-century mansion, featuring art collections, furniture, and historical artifacts.
- Casa das Histórias Paula Rego: A museum dedicated to the works of renowned Portuguese artist Paula Rego, located in a modern building with impressive architectural design.

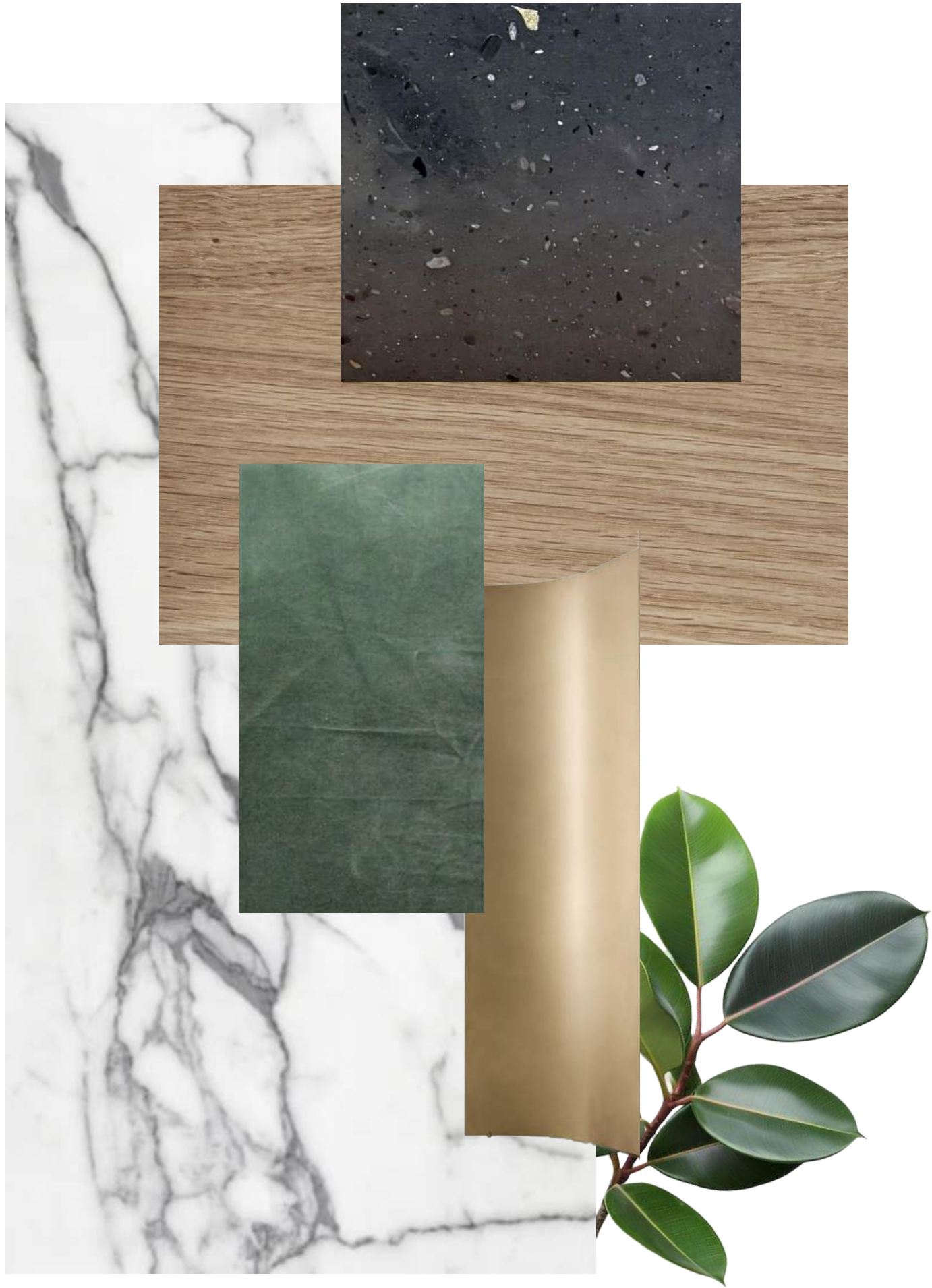
WELCOME TO THE LIGHTHOUSE

This is your new home. A building designed for living and enjoying. At Tricos Real Estate, we invite you to discover a place where elegance, luxury and vitality come together in every corner.



Entrance hall (left) and ground floor hallway (above)





NATURAL MATERIALS DESIGN MOODS

We have curated a selection of high-quality materials. You'll find natural finishes of marble, wood, and metal that create environments full of warmth and sophistication.

CASCAIS



LIGHTHOUSE's modern layouts create spaces full of light.

The interplay of finishes, spaces, and functionality define the character of your new home.



CASCAIS















* Render of the terrace T2B. The image shown is to be considered purely indicative. Furnishing elements and plants are to be considered excluded.



CASCAIS

*APARTMENT TECHNICAL
SHEETS*



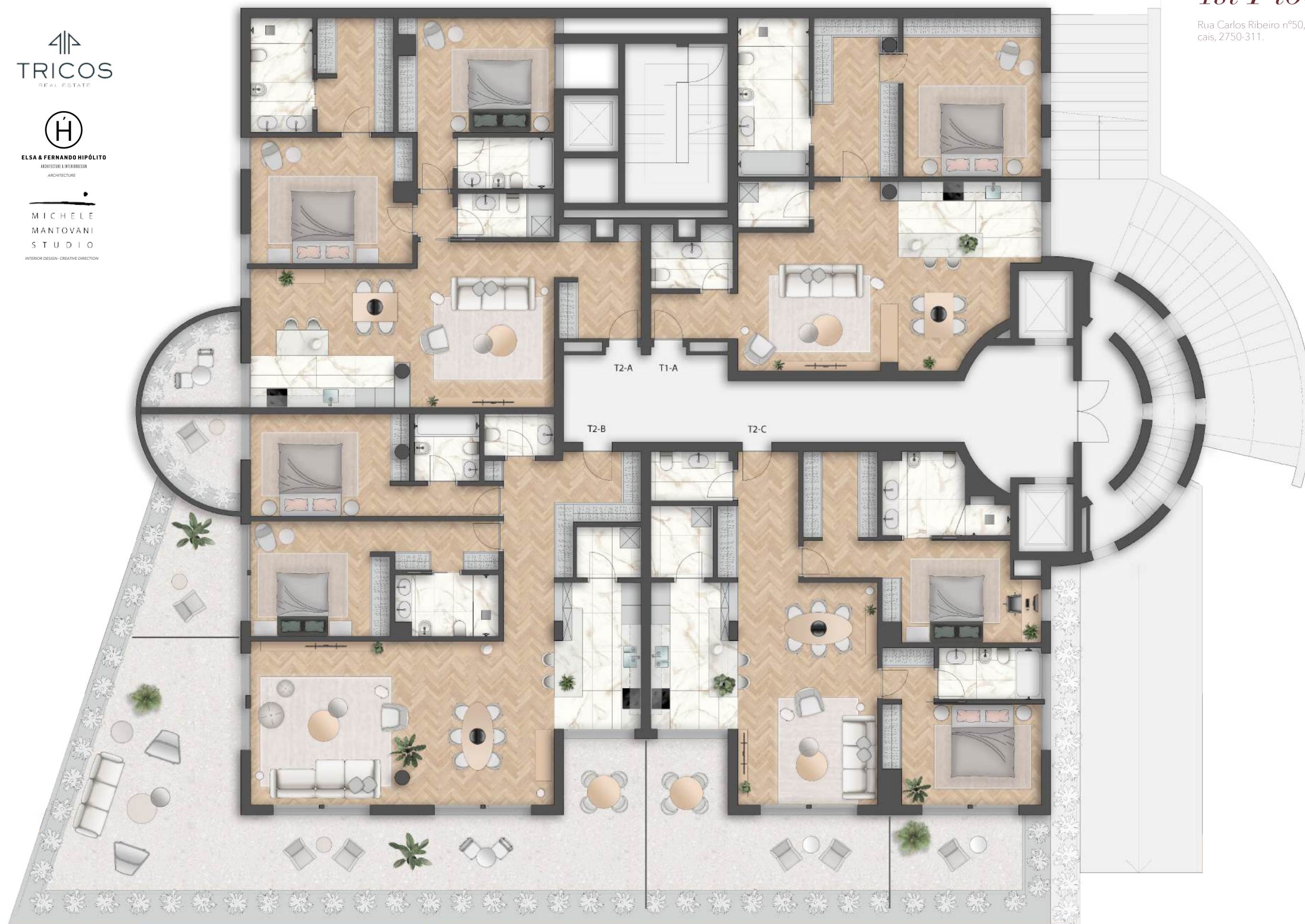
TRICOS
REAL ESTATE

ELSA & FERNANDO HIPÓLITO
ARCHITECTURE & INTERIOR DESIGN
ARCHITECTURE

MICHELE
MANTOVANI
STUDIO
INTERIOR DESIGN - CREATIVE DIRECTION

1st Floor

Rua Carlos Ribeiro nº50, Cas-
cais, 2750-311.



CASCAIS



LIGHTHOUSE CASCAIS

Rua Carlos Ribeiro nº50,
Cascais, 2750-311.

T1A

Piso 1
Floor 1
1 Bedroom

FRAÇÃO	CR
Fraction	
AREA DE COBERTURA	118,7m2
covered area	
VARANDA/TERRAÇO	0 m2
Terrace	
AREA TOTAL	118,7m2
Total Area	
ESTACIONAMIENTO	1
Parking	



HALL DE ENTRADA	3,78 m2
Hall	
SALA	36,92m2
Living room	
COZINHA	10,4 m2
Kitchen	
ARRUMO	3,13 m2
Pantry	
IS SOCIAL	3,7 m2
Social WC	
SUITE PRINCIPAL	45,37 m2
Master Suite	
QUARTO	21,62 m2
Bedroom	
IS SUITE PRINCIPAL	10,83 m2
Master Suite Bathroom	
CLOSET	12,92 m2
Closet	



LIGHTHOUSE CASCAIS

Rua Carlos Ribeiro nº50,
Cascais, 2750-311.

T2A

Piso 1
Floor 1
2 Bedrooms

FRAÇÃO	CS
Fraction	
AREA DE COBERTURA	134,01m2
covered area	
VARANDA/TERRAÇO	8,3 m2
Terrace	
AREA TOTAL	142,31m2
Total Area	
ESTACIONAMIENTO	2
Parking	



HALL DE ENTRADA	7,72 m2
Hall	
SALA	36,1m2
Living room	
COZINHA	7,12 m2
Kitchen	
IS SOCIAL	4 m2
Social WC	
SUITE PRINCIPAL	23,46 m2
Master Suite	
QUARTO	18,7 m2
Bedroom	
I.S SUITE PRINCIPAL	4,76 m2
Master Suite Bathroom	
SUITE 2	34,37 m2
SUITE 2	
QUARTO	19,3 m2
Bedroom	
I.S SUITE 2	6,8 m2
Suite 2 Bathroom	
CLOSET	8,27 m2
Closet	





LIGHTHOUSE CASCAIS

Rua Carlos Ribeiro nº50,
Cascais, 2750-311.



T2 B

Piso 1
Floor 1
2 Bedrooms

FRAÇÃO Fraction	CT
AREA DE COBERTURA Total Area	148,7m2
VARANDA/TERRAÇO Terrace	123,9m2
AREA TOTAL Total Area	272,6m2
ESTACIONAMIENTO Parking	2



ENTRADA CIRC. Hall	15,96 m2
SALA Living room	47,7m2
COZINHA Kitchen	12,28 m2
ARRUMO Pantry	3,15 m2
IS SOCIAL Social WC	2,8 m2
SUITE PRINCIPAL Master Suite	22,87 m2
QUARTO 1 Bedroom 1	18,7 m2
IS SUITE PRINCIPAL Master Suite Bathroom	4,17 m2
SUITE 2 Suite 2	26,3 m2
QUARTO 2 Bedroom 2	20,4 m2
I.S SUITE 2 Suite 2 Bathroom	5,9 m2



LIGHTHOUSE CASCAIS

Rua Carlos Ribeiro nº50,
Cascais, 2750-311.



T2 C

Piso 1
Floor 1
2 Bedrooms

FRAÇÃO Fraction	CU
AREA DE COBERTURA Total Area	132,95m2
VARANDA/TERRAÇO Terrace	49,5m2
AREA TOTAL Total Area	182,45m2
ESTACIONAMIENTO Parking	2



HALL DE ENTRADA Hall	9 m2
SALA Living room	29,85m2
COZINHA Kitchen	12,28 m2
ARRUMO Pantry	4,26 m2
IS SOCIAL Social WC	3,85 m2
SUITE PRINCIPAL Master Suite	30,82 m2
QUARTO1 Bedroom 1	16,92 m2
CLOSET Closet	6,1 m2
IS SUITE PRINCIPAL Master Suite Bathroom	7,8 m2
SUITE 2 Suite 2	22,52 m2
QUARTO 2 Bedroom 2	17,42 m2
I.S SUITE 2 Suite 2 Bathroom	5,1 m2



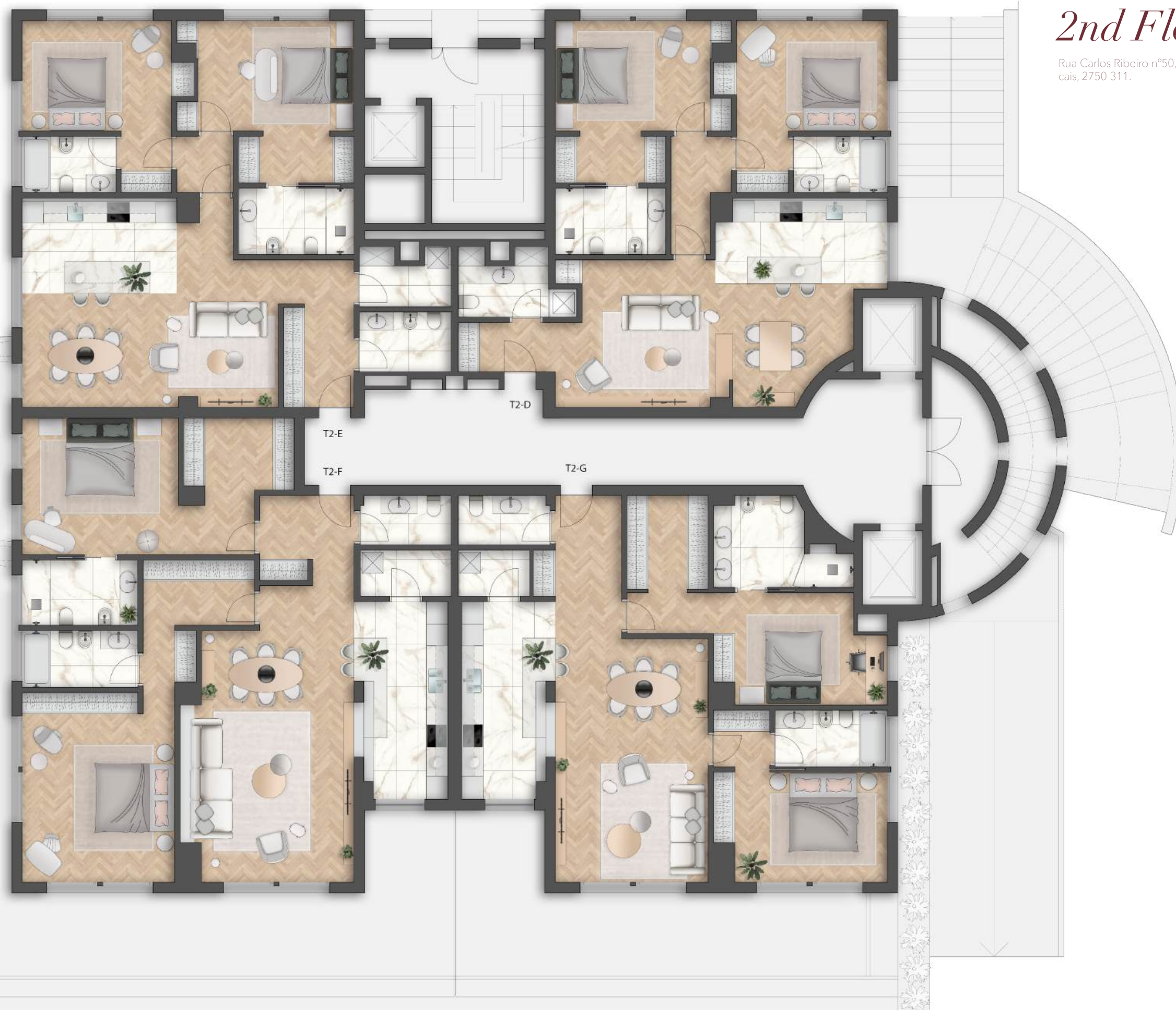
TRICOS
REAL ESTATE

ELSA & FERNANDO HIPÓLITO
ARCHITECTURE & INTERIOR DESIGN
ARCHITECTURE

MICHELE
MANTOVANI
STUDIO
INTERIOR DESIGN - CREATIVE DIRECTION

2nd Floor

Rua Carlos Ribeiro nº50, Cas-
cais, 2750-311.



CASCAIS



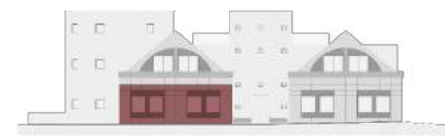
LIGHTHOUSE CASCAIS

Rua Carlos Ribeiro nº50,
Cascais, 2750-311.



LIGHTHOUSE CASCAIS

Rua Carlos Ribeiro nº50,
Cascais, 2750-311.



T2 D

Piso 2
Floor 2
2 Bedrooms

T2 E

Piso 2
Floor 2
2 Bedrooms

FRAÇÃO Fraction	DA
AREA DE COBERTURA Total Area	118,53m2
VARANDA/TERRAÇO Terrace	0 m2
AREA TOTAL Total Area	118,53 m2
ESTACIONAMIENTO Parking	2

FRAÇÃO Fraction	CZ
AREA DE COBERTURA Total Area	122,82 m2
VARANDA/TERRAÇO Terrace	0 m2
AREA TOTAL Total Area	122,82 m2
ESTACIONAMIENTO Parking	2



HALL Hall	3,85 m2
SALA Living room	30 m2
COZINHA Kitchen	11,48 m2
IS SOCIAL Social WC	4,33 m2
SUITE PRINCIPAL Suite 1	24,8 m2
QUARTO 1 Bedroom 2	14,8 m2
I.S SUITE PRINCIPAL Master Suite Bathroom	5,85 m2
CLOSET Closet	4,15 m2
SUITE 2 Suite 2	20,85 m2
QUARTO 2 Bedroom 2	16,56 m2
I.S SUITE 2 Suite 2 Bathroom	4,29 m2

HALL/ENT Hall	8,47 m2
SALA Living room	28,29 m2
COZINHA Kitchen	11,8 m2
ARRUMO Pantry	3,4 m2
IS SOCIAL Social WC	4,42 m2
CIRC. CIRC.	2,56 m2
SUITE PRINCIPAL Master Suite	23,98 m2
QUARTO Bedroom	15,25 m2
IS SUITE Master Suite Bathroom	10,3 m2
CLOSET Closet	4,35 m2
SUITE 2 Suite 2	20,63 m2
QUARTO Bedroom	16,38 m2
I.S SUITE 2 Suite 2 Bathroom	4,25 m2





LIGHTHOUSE CASCAIS

Rua Carlos Ribeiro nº50,
Cascais, 2750-311.

T2 F

Piso 2
Floor 2
2 Bedrooms

FRAÇÃO Fraction	CV
AREA DE COBERTURA covered area	155,97m2
VARANDA/TERRAÇO Terrace	0 m2
AREA TOTAL Total Area	155,97m2
ESTACIONAMIENTO Parking	2



TRICOS
REAL ESTATE

ELSA & FERNANDO HIPÓLITO
ARCHITECTURE & INTERIORDESIGN
ARCHITECTURE

MICHELE
MANTOVANI
STUDIO
INTERIOR DESIGN- CREATIVE DIRECTION



LIGHTHOUSE CASCAIS

Rua Carlos Ribeiro nº50,
Cascais, 2750-311.

T2 G

Piso 2
Floor 2
2 Bedrooms

FRAÇÃO Fraction	CX
AREA DE COBERTURA covered area	132,13 m2
VARANDA/TERRAÇO Terrace	0 m2
AREA TOTAL Total Area	132,13 m2
ESTACIONAMIENTO Parking	2



TRICOS
REAL ESTATE

ELSA & FERNANDO HIPÓLITO
ARCHITECTURE & INTERIORDESIGN
ARCHITECTURE

MICHELE
MANTOVANI
STUDIO
INTERIOR DESIGN- CREATIVE DIRECTION

HALL ENTRADA Hall	6,15 m2
SALA Living room	32,1 m2
COZINHA Kitchen	14,37 m2
ARRUMOS Pantry	2,63 m2
IS SOCIAL Social WC	3,6 m2
SUITE PRINCIPAL Master Suite	30,82 m2
QUARTO 1 Bedroom 1	16,92 m2
IS SUITE PRINCIPAL Master Suite Bathroom	7,8 m2
CLOSET CLOSET	6,1 m2
SUITE 2 SUITE 2	22,5 m2
QUARTO 2 Bedroom 2	17,42 m2
I.S SUITE 2 Suite 2 Bathroom	5,08 m2



Address: Ed. Presidente, Av. Miguel
Bombarda, 36 -6.F, 1050-165 LISBOA
(Portugal)
E-mail: info@tricosgps.com
Telephone: +351 21 312 9320

